

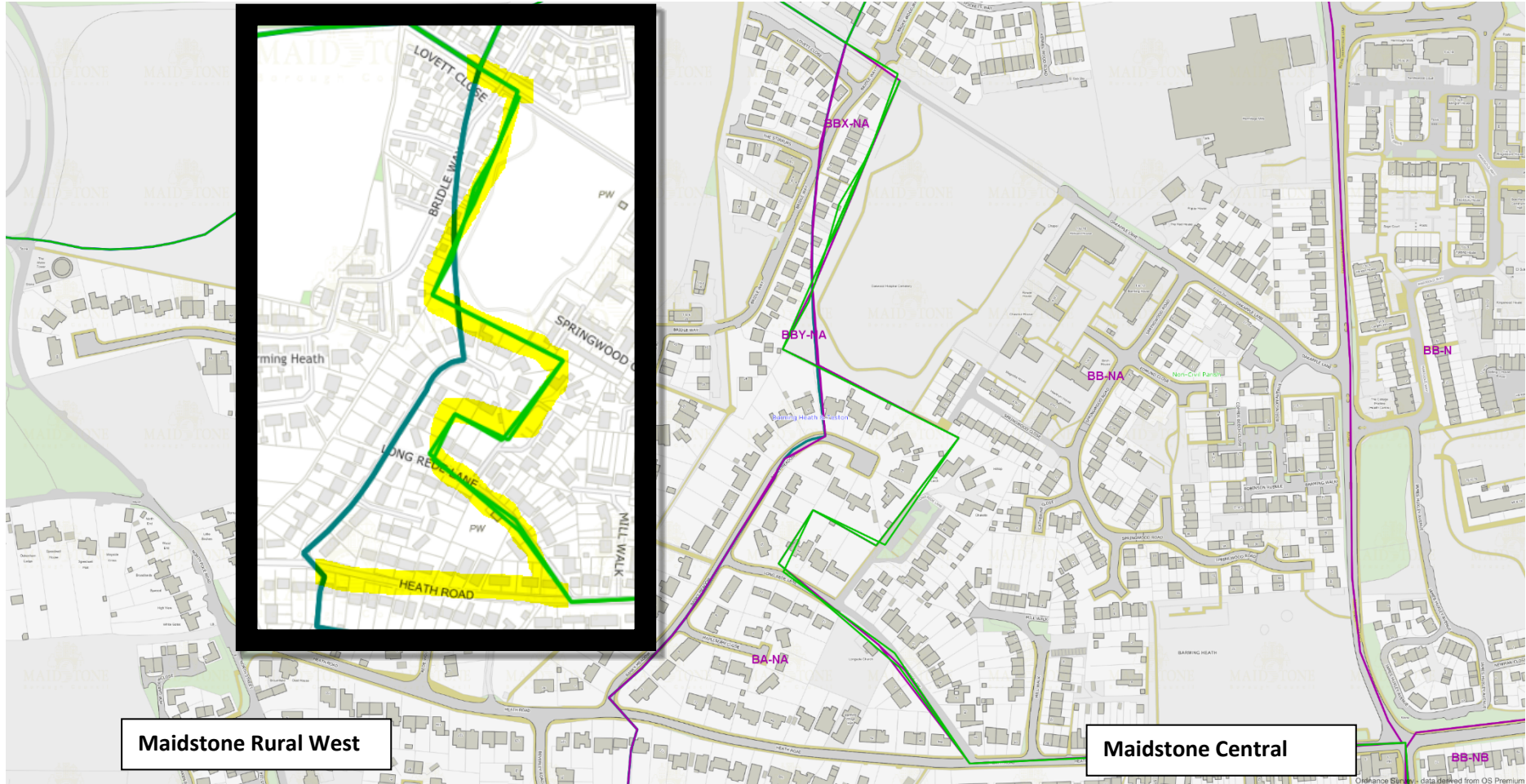
Appendix 1 – Explanatory Note and Map

Alteration Number	Area	Boundary Type	Change	Electors	Electorate Impact Added Area	Electorate Impact Removed Area
1.	Barming	KCC	Align County and parish Remove BBX-NA Remove BBY-NA Reduce BA-NA to Heath Rd	22 0 79	Maidstone Rural West 14,543 to 14,644	Maidstone Central 33,630 to 33,532 (33,574)
2.	Grove Green	KCC	Align county and parish Remove HAX-HB, Remove HAZ Remove HY-EB	151 0 0	Maidstone Rural East 13,033 to 13,184	Maidstone Rural North 15,763 to 15,612
3.	Tovil	KCC	Align county to parish Remove VBY-XC	42	Maidstone Central 33,630 to 33,672 (33,574)	Maidstone South 15,163 to 15,121 (15,171)
4.	Downswood	KCC	Align county to parish Remove CCY-I	50	Maidstone South 15,163 to 15,213 (15,171)	Maidstone South East 15,104 to 15,054 (15,045)
5.	Langley	KCC	Align county to parish Remove LE-UZ	9	Maidstone Rural South 16,547 to 16,556	Maidstone South East 15,104 to 15,095 (15,045)

The rationale for all the changes is to align Divisional boundaries with Parish boundaries which has the practical effect of removing polling districts which contain very small numbers of electors (shown in the electors column above). This reduces the number of separate registers in polling stations reducing the likelihood of polling errors and makes administration of the register easier. It also provides practical clarity for residents as some boundaries currently cut through houses or between neighbours (i.e. neighbours go to different stations/have different ballot papers).

There is also the need to recognise communities with boundaries. By encapsulating whole parishes and communities within divisions as far as possible this improves the quality of the boundary and the Division. This removes confusion for residents and councillors.

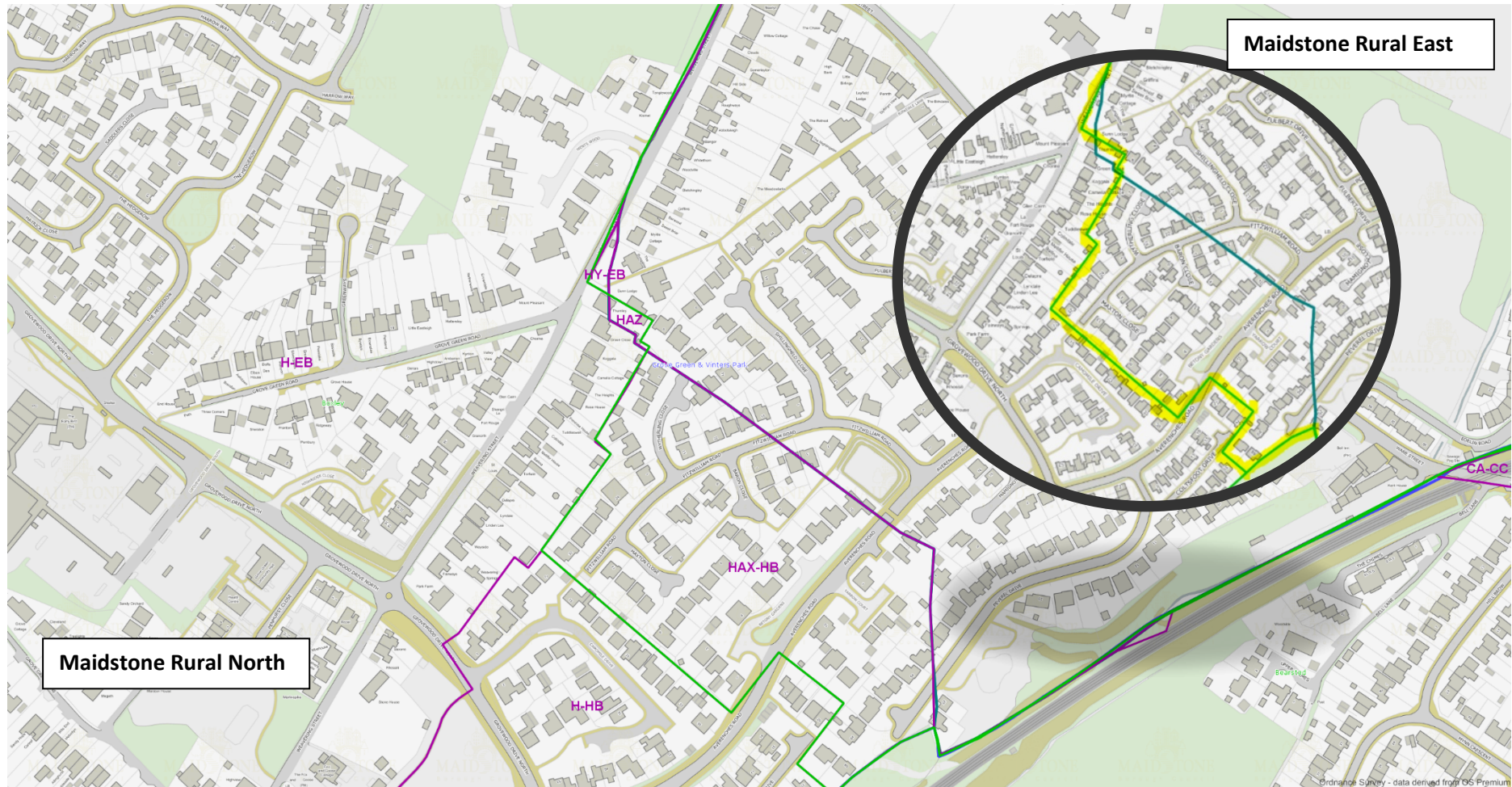
Alteration 1. – Barming – Purple boundary to green boundary to remove BBX-NA, BBY-NA and reduce BA-NA along Heath Rd (Highlight is proposed new boundary)



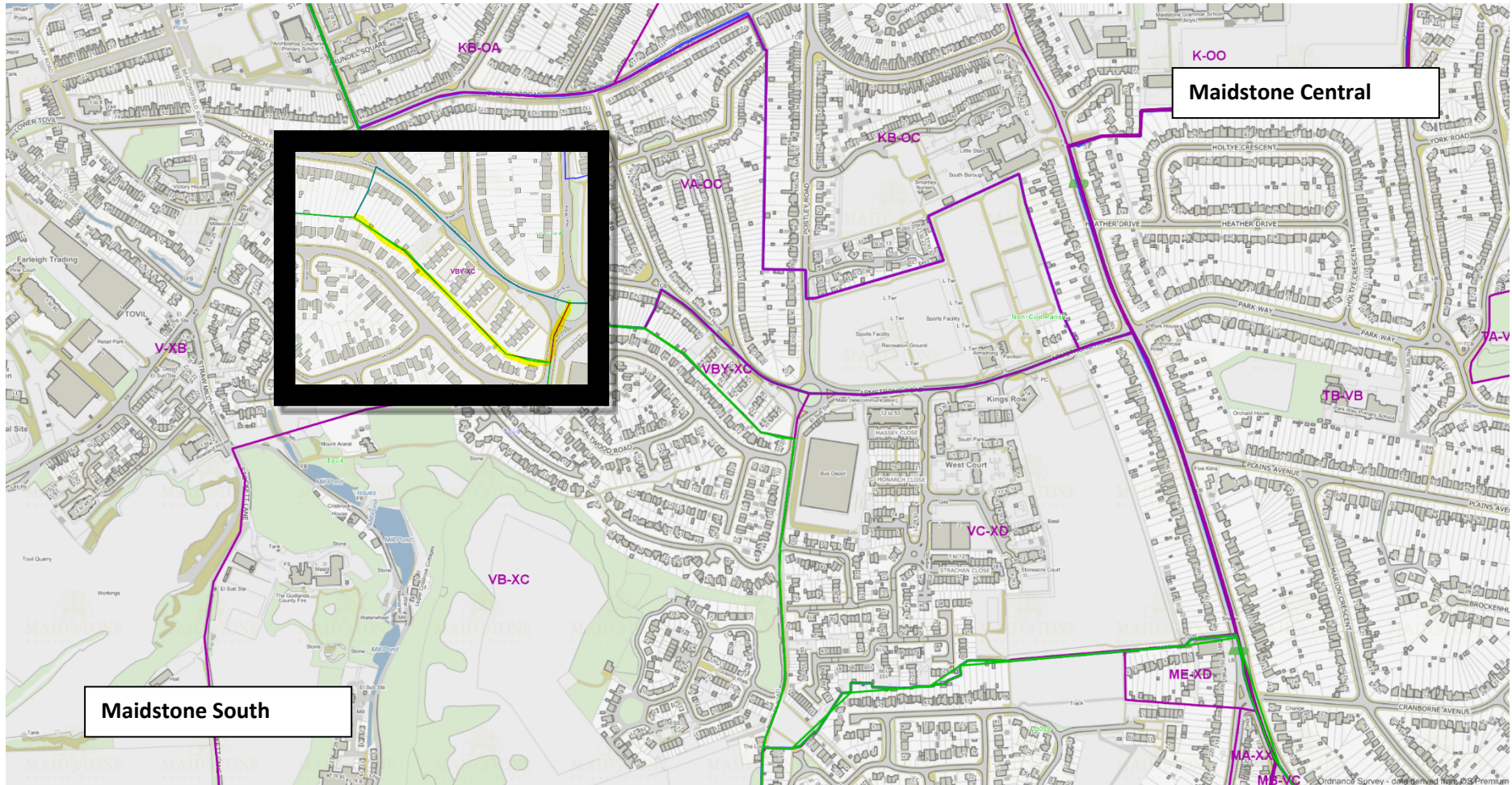
Maidstone Rural West

Maidstone Central

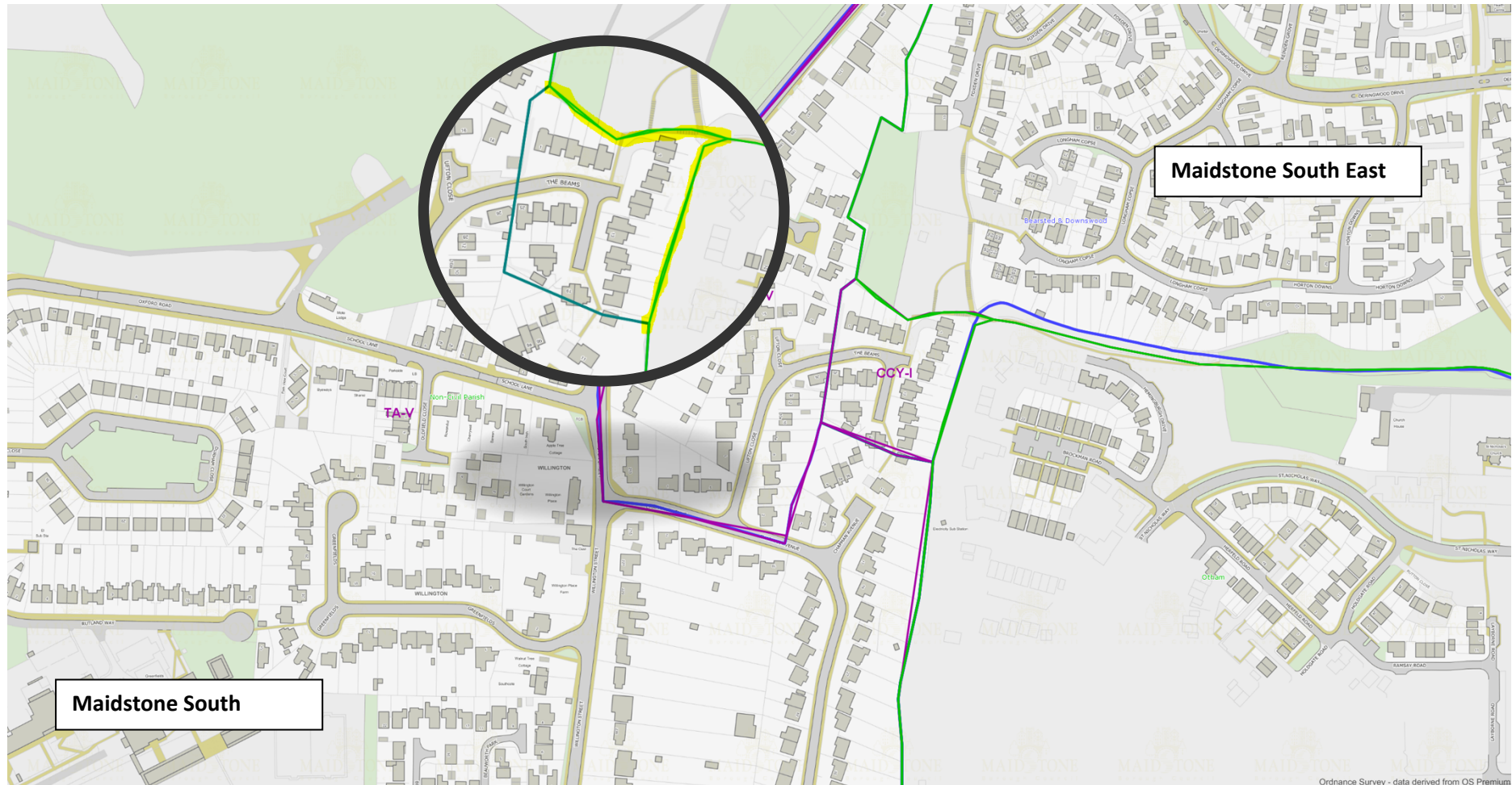
Alteration 2. - Grove Green – Purple boundary to green boundary to remove HY-EB, HAZ, & HAX-HB (Highlight is proposed new boundary)



Alteration 3. – Tovil – Purple boundary to green boundary to remove VBY-XC (Highlight is proposed new boundary)



Alteration 4. – Downswood – Purple boundary to green boundary to remove CCY-I (Highlight is proposed new boundary)



Alteration 5. – Langley – Purple boundary to green boundary to remove LE-UZ (Highlight is proposed new boundary)

